

NEW

SPEED



361° FLAME^{RS}

*Chase personal bests in this full-length carbon fibre
race day shoe*



KATIE ZAFERES,
LADIES TRIATHLON

NEW

361° FLAME^{RS}

SPEED



RUNNING PROFILE

Off the back of the success of the 361° Flame (bronze medal winner at the Tokyo Olympics 2022), comes the updated 361° Flame RS. This lightweight, race-ready running shoe is the newest model designed to chase down records. Fitted with a full-length carbon plate working in tandem with new PU midsole technology, the 361° Flame RS offers a snappy and responsive ride. It dials in running economy throughout the gait, leveraging the carbon fiber plate to effortlessly propel the runner forward and allowing them to save more energy while keeping pace in later stages of a race.

AUDIENCE

This shoe is engineered for competition and speed running. Designed for high-pace runners who have a short ground contact time and delivers a higher comfort level over distance compared to classic competition and racing shoes.



FEATURES

- **UPDATED QU!KFLAME** - Newly developed PEBA nylon elastomer offers superior cushioning and performance. It is extremely springy and 45% lighter than traditional EVA and durable enough to maintain responsiveness. It delivers excellent flexibility, high resilience and rigidity, creating a continuous forward momentum for runners.
- **UPDATED QU!KBONE** - Engineered full length carbon fiber plate strategically positioned between two layers of QU!KFLAME and tuned to provide assisted propulsion and energy return throughout the running gait.
- **UPDATED MORPHIT LACING SYSTEM** - Superior support and comfort around the mid-foot. Secured through specific multidimensional cage construction.
- **3D PRINT DESIGN** is combined with the MORPHIT Lacing System to secure the midfoot.
- **Plush heel collar shape** - Heel collar lined with specially designed foam to secure the heel during fast runs.
- **UPDATE Lightweight Mono Mesh Upper** - Ultra-lightweight soft mono-mesh gives enhanced breath-ability and smooth movement and full toe-to-heel ventilation.
- **Anatomical Pressure Free Tongue** - The new design contours the top of the ankle for a snug custom fit. By combining super-soft materials, the tongue removes pressure and stress from the top of the foot during dorsiflexion.
- **RPU RUBBER** - Traction and control straight off the mark, the forefoot is equipped with a layer of rubber which provides grip and stability.

NEW

361° FLAME^{RS}

TECHNICAL OVERVIEW

SPEED



UPDATE

MORPHIT LACING SYSTEM

Superior support and comfort around the mid-foot. Secured through specific multidimensional cage construction.

UPDATE

MONO ENGINEERED MESH

A soft mono-mesh gives enhanced breath-ability and smooth movement and full toe-to-heel ventilation.

UPDATE

ANATOMICAL PRESSURE FREE TONGUE DESIGN

The new design contours the top of the ankle for a snug custom fit. By combining super-soft materials, the tongue removes pressure and stress from the top of the foot during dorsiflexion.

PLUSH HEEL COLLAR SHAPE

For slippage prevention and a predictable hassle-free run. The heel is comfortably secured by the heel collar, which is lined with speciality foam, which also helps reduce weight.

3D PRINT DESIGN

is combined with the MORPHIT Wrapping System to secure the midfoot.

UPPER DESIGN

PLATFORM DESIGN

Enhanced Forefoot Rocker

Designed to attenuate shock during vertical loading. This helps to reduce ankle flexion, producing a stable and more efficient forward transfer motion during landing through toe-off, ultimately increasing higher energy conservation of the lower leg muscles.

NEW TECHNOLOGY

QU!KFLAME

Newly developed PEBA nylon elastomer offers superior cushioning and performance. It is extremely springy and 45% lighter than traditional EVA, and durable enough to maintain responsiveness. It delivers excellent flexibility, high resilience and rigidity, bringing a continuous forward momentum for runners.

NEW TECHNOLOGY

QU!KBONE

Engineered full length carbon fiber plate strategically positioned between two layers of QU!KFLAME and tuned to provide assisted propulsion and energy return throughout the running gait.

RPU RUBBER

Traction and control straight off the mark, the forefoot is equipped with a layer of rubber which provides grip and stability.

QU!KFLAME

QU!KBONE

QU!KFLAME

RPU RUBBER

MEN'S

Sizes
7-12,13

Weight
209g

Stack
24-32mm

Drop
8mm

WOMEN'S

Sizes
6.5 -10,11

Weight
170g

Stack
24-32mm

Drop
8mm

361° FLAME^{RS}

TECHNICAL DETAILS

SPEED

**MORPHIT**

UPDATE

MORPHIT LACING SYSTEM

Superior support and comfort around the mid-foot. Secured through specific multidimensional cage construction.

3D PRINT DESIGN

is combined with the MORPHIT Lacing System to secure the midfoot.

UPDATE

ANATOMICAL PRESSURE FREE TONGUE DESIGN

The new design contours the top of the ankle for a snug custom fit. By combining super-soft materials, the tongue removes pressure and stress from the top of the foot during dorsiflexion.



UPDATE

MONO ENGINEERED MESH

A soft mono-mesh gives enhanced breath-ability and smooth movement and full toe-to-heel ventilation.

**UPPER DESIGN****PLATFORM DESIGN**

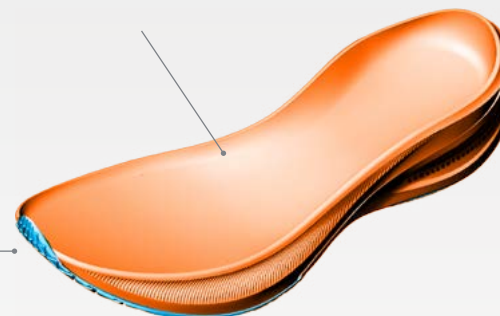
NEW TECHNOLOGY

QU!KFLAME

Newly developed PEBA nylon elastomer offers superior cushioning and performance. It is extremely springy and 45% lighter than traditional EVA, and durable enough to maintain responsiveness. It delivers excellent flexibility, high resilience and rigidity, bringing a continuous forward momentum for runners.

Enhanced Forefoot Rocker

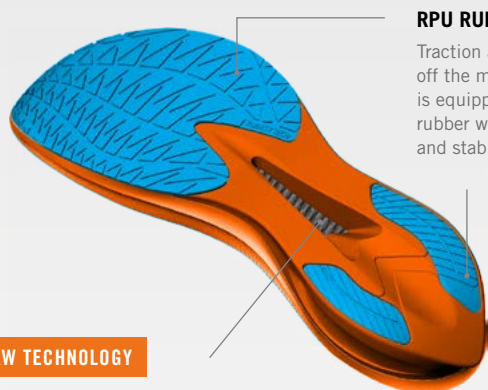
Designed to attenuate shock during vertical loading. This helps to reduce ankle flexion, producing a stable and more efficient forward transfer motion during landing through toe-off, ultimately increasing higher energy conservation of the lower leg muscles.



NEW TECHNOLOGY

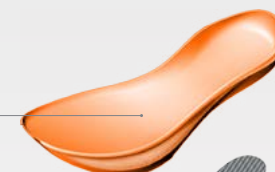
QU!KBONE

Engineered full length carbon fiber plate strategically positioned between two layers of QU!KFLAME and tuned to provide assisted propulsion and energy return throughout the running gait.

**RPU RUBBER**

Traction and control straight off the mark, the forefoot is equipped with a layer of rubber which provides grip and stability.

QU!KFLAME



QU!KBONE



QU!KFLAME



RPU RUBBER



NEW

361° FLAME^{RS}

PRODUCT OVERVIEW

SRP
USD 170.00



W Y2236-9868
Blue Tint/Mykonos Blue



SPEED

RUNNING PROFILE

Off the back of the success of the 361° Flame (bronze medal winner at the Tokyo Olympics 2022), comes the updated 361° Flame^{RS}. This lightweight, race-ready running shoe is the newest model designed to chase down records. Fitted with a full-length carbon plate working in tandem with new PU midsole technology, the 361° Flame^{RS} is a snappy and responsive ride. It dials in running economy throughout the gait, leveraging the carbon fiber plate to effortlessly propel the runner forward and allowing them to save more energy while keeping pace in later stages of a race.

FEATURES

- **UPDATED QU!KFLAME** - Newly developed PEBA nylon elastomer offers superior cushioning and performance. It is extremely springy and 45% lighter than traditional EVA and durable enough to maintain responsiveness. It delivers excellent flexibility, high resilience and rigidity, creating a continuous forward momentum for runners.
- **UPDATED QU!KBONE** - Engineered full length carbon fiber plate strategically positioned between two layers of QU!KFLAME and tuned to provide assisted propulsion and energy return throughout the running gait.
- **UPDATED MORPHIT LACING SYSTEM** - Superior support and comfort around the mid-foot. Secured through specific multidimensional cage construction.
- **3D PRINT DESIGN** is combined with the MORPHIT Lacing System to secure the midfoot.
- **Plush heel collar shape** - Heel collar lined with specially designed foam to secure the heel during fast runs.
- **UPDATE Lightweight Mono Mesh Upper** - Ultra-lightweight soft mono-mesh gives enhanced breath-ability and smooth movement and full toe-to-heel ventilation.
- **Anatomical Pressure Free Tongue** - The new design contours the top of the ankle for a snug custom fit. By combining super-soft materials, the tongue removes pressure and stress from the top of the foot during dorsiflexion.
- **RPU RUBBER** - Traction and control straight off the mark, the forefoot is equipped with a layer of rubber which provides grip and stability.

POWERED BY
QU!KFLAME

QU!KBONE

MEN'S

Sizes
7-12,13

Weight
209g

Stack
24-32mm

Drop
8mm

WOMEN'S

Sizes
6.5 -10,11

Weight
170g

Stack
24-32mm

Drop
8mm

NEW

361° FLAME^{RS}

RANGE

SPEED



M Y2236-8356
Lime Punch/Scuba Blue



W Y2236-9868
Blue Tint/Mykonos Blue

MEN'S

Sizes
7-12,13

Weight
209g

Stack
24-32mm

Drop
8mm

WOMEN'S

Sizes
6.5 -10,11

Weight
170g

Stack
24-32mm

Drop
8mm