

NEW

SPEED



361° FLAMEST

Speed training



KATIE ZAFERES,
LADIES TRIATHLON

NEW

361° FLAMEST

SPEED



RUNNING PROFILE

361° Flame ST is another exciting new addition to our high-speed professional running shoe series. Based off the success of its predecessor, the 361° Flame, this new model uses the latest technology AND offers more versatility - by being the perfect all-in-one speed shoe for a multitude of workouts - from speed training through to race-days.

It maintains its lightweight and speed attributes, yet is more comfortable, softer with more flexibility, delivering a bouncier running experience.

AUDIENCE

This shoe is for experienced runners looking for an all in one trainer. Quick enough for race days but comfortable and durable enough for full force daily training.

NEW

361° FLAMEST

SPEED



FEATURES

- **Speedy and modern** upper design
- **Progressive New 3-Logo** Iteration on quarter panel for additional midfoot rigidity.
- **Breathable Mono-Engineered Mesh Upper** which gives enhanced breath-ability and smooth movement and full toe-to-heel ventilation.
- **Anatomically designed Pressure Free Tongue** contours the top of the ankle for a snug custom fit. By combining super-soft materials, the tongue removes pressure and stress from the top of the foot during dorsiflexion.
- Plush **MICROFIBER** heel collar lining
- **QUIKFLAME Foam Technology** (full length) is extremely springy and delivers excellent flexibility, high resilience and rigidity, bringing a continuous forward momentum for runners.
- **RPU Rubber** outsole is lightweight and durable for traction and control straight off the mark.
- **NEW QUIKSPINE (F.T.P.)** Sandwiched in the midsole is the QUIKSPINE Flexible Transfer Plate F.T.P which is constructed from glass fiber. It adds integrity to the midsole and helps with better running efficiency during increased fatigue as it always provides forward propulsion.
- **Enhanced Forefoot Rocker** is designed to attenuate shock during vertical loading. This helps to reduce ankle flexion, producing a stable and more efficient forward transfer motion during landing through toe-off, ultimately increasing higher energy conservation of the lower leg muscles.

361° FLAMEST

TECHNICAL OVERVIEW

SPEED

MONO ENGINEERED MESH

A soft mono-mesh gives enhanced breath-ability and smooth movement and full toe-to-heel ventilation.

ANATOMICAL PRESSURE FREE TONGUE DESIGN

The design contours the top of the ankle for a snug custom fit. By combining super-soft materials, the tongue removes pressure and stress from the top of the foot during dorsiflexion.

PLUSH HEEL COLLAR SHAPE

For slippage prevention and a predictable hassle-free run. The heel is comfortably secured by the heel collar, which is lined with speciality foam, which also helps reduce weight.

3D PRINT DESIGN

is combined with the MORPHIT Wrapping System to secure the midfoot.

UPPER DESIGN

Enhanced Forefoot Rocker

Designed to attenuate shock during vertical loading. This helps to reduce ankle flexion, producing a stable and more efficient forward transfer motion during landing through toe-off, ultimately increasing higher energy conservation of the lower leg muscles.

QU!KFLAME

Newly developed PEBA nylon elastomer offers superior cushioning and performance. It is extremely springy and 45% lighter than traditional EVA, and durable enough to maintain responsiveness. It delivers excellent flexibility, high resilience and rigidity, bringing a continuous forward momentum for runners.

NEW TECHNOLOGY

QU!KSPINE F.T.P

Sandwiched in the midsole is the QU!KSPINE Flexible Transfer Plate F.T.P which is constructed from glass fiber. It adds integrity to the midsole and helps with better running efficiency during increased fatigue as it always provides forward propulsion.

RPU RUBBER

Traction and control straight off the mark, the forefoot is equipped with a layer of rubber which provides grip and stability.

PLATFORM DESIGN

QU!KFLAME

QU!KSPINE F.T.P

QU!KFLAME

RPU RUBBER

MEN'S

Sizes
7-12,13

Weight
215g

Stack
24-32mm

Drop
8mm

WOMEN'S

Sizes
6.5 -10,11

Weight
185g

Stack
24-32mm

Drop
8mm

361° FLAMEST

TECHNICAL DETAILS

SPEED

3D PRINT DESIGN

is combined with the MORPHIT Lacing System to secure the midfoot.



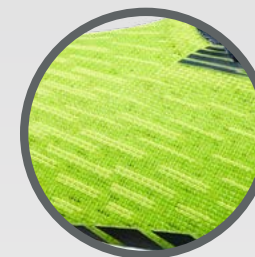
ANATOMICAL PRESSURE FREE TONGUE DESIGN

The new design contours the top of the ankle for a snug custom fit. By combining super-soft materials, the tongue removes pressure and stress from the top of the foot during dorsiflexion.



MONO ENGINEERED MESH

A soft mono-mesh gives enhanced breath-ability and smooth movement and full toe-to-heel ventilation.

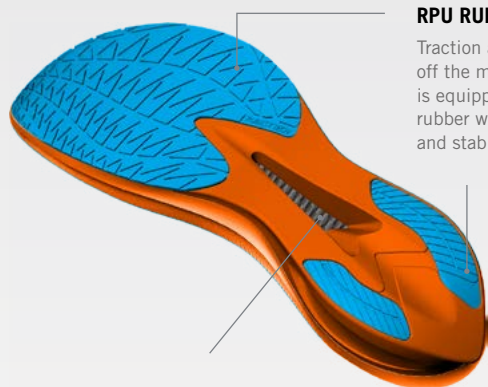


UPPER DESIGN

PLATFORM DESIGN

RPU RUBBER

Traction and control straight off the mark, the forefoot is equipped with a layer of rubber which provides grip and stability.



QUIKFLAME

Newly developed PEBA nylon elastomer offers superior cushioning and performance. It is extremely springy and 45% lighter than traditional EVA, and durable enough to maintain responsiveness. It delivers excellent flexibility, high resilience and rigidity, bringing a continuous forward momentum for runners.

Enhanced Forefoot Rocker

Designed to attenuate shock during vertical loading. This helps to reduce ankle flexion, producing a stable and more efficient forward transfer motion during landing through toe-off, ultimately increasing higher energy conservation of the lower leg muscles.

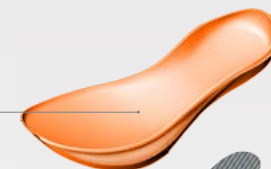


NEW TECHNOLOGY

QUIKSPINE F.T.P

Sandwiched in the midsole is the QUIKSPINE Flexible Transfer Plate F.T.P which is constructed from glass fiber. It adds integrity to the midsole and helps with better running efficiency during increased fatigue as it always provides forward propulsion.

QUIKFLAME



QUIKSPINE F.T.P



QUIKFLAME



RPU RUBBER



NEW

361° FLAMEST

PRODUCT OVERVIEW

SPEED



M

Y2307-8356

Lime Punch/Scuba Blue



RUNNING PROFILE

361° Flame ST is another exciting new addition to our high-speed professional running shoe series. This new model uses the latest technology AND offers more versatility - by being the perfect all-in-one speed shoe for a multitude of workouts - from speed training through to race-days. It maintains its lightweight and speed attributes, yet is more comfortable, softer with more flexibility, delivering a bouncier running experience.

FEATURES

- **Speedy and modern** upper design
- **Progressive New 3-Logo** Iteration on quarter panel for additional midfoot rigidity.
- **Breathable Mono-Engineered Mesh Upper** which gives enhanced breathability and smooth movement and full toe-to-heel ventilation.
- **Anatomically designed Pressure Free Tongue** contours the top of the ankle for a snug custom fit. By combining super-soft materials, the tongue removes pressure and stress from the top of the foot during dorsiflexion.
- Plush **MICROFIBER** heel collar lining
- **QUIKFLAME Foam Technology** (full length) is extremely springy and delivers excellent flexibility, high resilience and rigidity, bringing a continuous forward momentum for runners.
- **RPU Rubber** outsole is lightweight and durable for traction and control straight off the mark.
- **NEW QUIKSPINE (F.T.P.)** Sandwiched in the midsole is the QUIKSPINE Flexible Transfer Plate F.T.P which is constructed from glass fiber. It adds integrity to the midsole and helps with better running efficiency during increased fatigue as it always provides forward propulsion.
- **Enhanced Forefoot Rocker** is designed to attenuate shock during vertical loading. This helps to reduce ankle flexion, producing a stable and more efficient forward transfer motion during landing through toe-off, ultimately increasing higher energy conservation of the lower leg muscles.

POWERED BY
QUIKFLAME

QUIKSPINE F.T.P

MEN'S

Sizes
7-12,13

Weight
215g

Stack
24-32mm

Drop
8mm

WOMEN'S

Sizes
6.5 -10,11

Weight
185g

Stack
24-32mm

Drop
8mm

NEW

361° FLAMEST

RANGE

SPEED



M Y2307-8356
Lime Punch/Scuba Blue



W Y2357-5368
Blue Tint/Mykonos Blue

MEN'S

Sizes
7-12,13

Weight
215g

Stack
24-32mm

Drop
8mm

WOMEN'S

Sizes
6.5 -10,11

Weight
185g

Stack
24-32mm

Drop
8mm