

NEW

NEUTRAL



## 361° CENTAURI

*Run free with the perfect blend of comfort, responsiveness and ultimate fit.*

NEW

# 361° CENTAURI

NEUTRAL



## RUNNING PROFILE

The all new 361° CENTAURI is a shoe to be reckoned with – it packs in everything needed for a dynamic, distraction free and versatile running shoe.

Designed from the ground up, this latest addition to our Neutral running shoe range has been made for all-day performance. Runners will appreciate the CENTAURI for its technology, ventilation, durability and light weight cushioning, especially when running on those hard surfaces.

**Enjoy the freedom. Run Free.**

## AUDIENCE

The CENTAURI can accommodate any runner type for a variety of distances.

It is perfect for those who seek a dynamic neutral shoe with the perfect blend of quick rebound, durability and the ultimate fit.



NEW

# 361° CENTAURI

NEUTRAL



## FEATURES

- **NEW** Simplistic Modern Upper Design.
- **BREATHABLE ENGINEERED KNIT FABRIC** ensures great ventilation for those longer miles and ample space for toe splay during natural motion.
- \* **ANATOMICALLY DESIGNED PRESSURE FREE TONGUE** removes pressure and stress from the top of the foot.
- **PROGRESSIVE NEW 3D PRINTED LOGO** on quarter panel, delivers additional mid-foot support.
- **3M REFLECTIVE HEEL COUNTER** safety feature for enhanced low light visibility.
- **NEW – ONE FULL LENGTH ENGAGE (E-TPE) FOAM PLATFORM TECHNOLOGY** with flex grooves delivers the next level of underfoot cushioning.
- **HIGH ABRASION RUBBER TECHNOLOGY: H.A.R.T.** The rubber technology is positioned in key loading areas to deliver better cushioning, flexibility and traction for smooth transitions.
- **NEW LAST** provides better fore foot fitting. Added toe-spring to promote a more efficient toe-off.
- **ORTHOLITE SOCKLINER COMFORT FOAM INSOLES** provide long-lasting comfort, excellent moisture management and a high-level of breath-ability achieved through open-cell Ortholite insoles utilizing 20% recycled content.

NEW

# 361° CENTAURI

## TECHNICAL OVERVIEW

NEUTRAL

**PROGRESSIVE NEW 3D PRINTED LOGO** on quarter panel, delivers additional mid-foot support.

**BREATHABLE ENGINEERED KNIT FABRIC** ensures great ventilation for those longer miles and ample space for toe splay during natural motion.

**ANATOMICAL PRESSURE FREE TONGUE DESIGN**  
The design contours the top of the ankle for a more custom fit. It removes pressure and stress from the top of the foot during dorsiflexion by combining super-soft materials with an anatomical pattern.

Ortholite®

### Comfort Foam Insoles

Long-lasting comfort, excellent moisture management and a high-level of breath-ability achieved through open-cell Ortholite insoles utilizing 20% recycled content.

### PLUSH HEEL COLLAR SHAPE

Slippage prevention for a predictable hassle-free run is secured by supportive heel collar design.

**A COMFORTABLE COLLAR LINING** to easily slide on the shoe and cradle the heel, keeping it in place.

**3M REFLECTIVE HEEL COUNTER** safety feature for enhanced low light visibility.

## UPPER DESIGN

## PLATFORM DESIGN

NEW

**LAST** shape adds the perfect amount of volume in the forefoot, allowing for natural toe splay and assisting with better running efficiency.

## QU!KFLEX

**QU!K FLEX 4Foot Engineering** provides enhanced ground contact for better traction and acceleration. Flex grooves mimic the natural motion of the foot to deliver a natural and balanced toe-off.

NEW

## ENGAGE

One full length Engage (E-TPE) foam platform, with flex grooves, delivers the next level of underfoot cushioning.

### HIGH ABRASION RUBBER TECHNOLOGY: H.A.R.T.

The anti-abrasion rubber in rear provides grip for a stable running experience.

Ortholite®

ENGAGE

QU!KFLEX

### MEN'S

Sizes  
7-13,14

Weight  
283g

Stack  
22-31mm

Drop  
9mm

### WOMEN'S

Sizes  
6-11

Weight  
227g

Stack  
22-31mm

Drop  
9mm



NEW

# 361° CENTAURI

## TECHNICAL DETAILS

NEUTRAL

### PLUSH HEEL COLLAR SHAPE

Slippage prevention for a predictable hassle-free run is secured by supportive heel collar design.

**A COMFORTABLE COLLAR LINING** to easily slide on the shoe and cradle the heel, keeping it in place.

**3M REFLECTIVE HEEL COUNTER** Safety feature for enhanced low light visibility.



### ANATOMICAL PRESSURE FREE TONGUE DESIGN

The design contours the top of the ankle for a more custom fit. It removes pressure and stress from the top of the foot during dorsiflexion by combining super-soft materials with an anatomical pattern.

**BREATHABLE ENGINEERED KNIT FABRIC** ensures great ventilation for those longer miles and ample space for toe splay during natural motion.

NEW

**LAST** shape adds the perfect amount of volume in the forefoot, allowing for natural toe splay and assisting with better running efficiency.



## UPPER DESIGN

## QU!KFLEX

**QU!K FLEX 4Foot Engineering** provides enhanced ground contact for better traction and acceleration. Flex grooves mimic the natural motion of the foot to deliver a natural and balanced toe-off.



**HIGH ABRASION RUBBER TECHNOLOGY: H.A.R.T.** is placed in key loading areas to ensure better cushioning and grip for a more stable running experience.

NEW **ENGAGE**

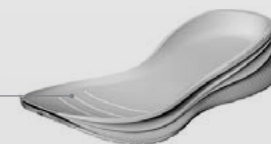
One full length Engage (E-TPE) foam platform, with flex grooves, delivers the next level of underfoot cushioning.

## PLATFORM DESIGN

Ortholite®



ENGAGE



QU!KFLEX



MEN'S

Sizes  
7-13,14

Weight  
283g

Stack  
22-31mm

Drop  
9mm

WOMEN'S

Sizes  
6-11

Weight  
227g

Stack  
22-31mm

Drop  
9mm

NEW

# 361° CENTAURI

## PRODUCT OVERVIEW

NEUTRAL



M

Y2301-0206

Oyster Mushroom/Sleet



### RUNNING PROFILE

The all new 361° CENTAURI is a shoe to be reckoned with – it packs in everything needed for a dynamic, distraction free and versatile running shoe. Designed from the ground up, this latest addition to our Neutral running shoe range has been made for all-day performance. Runners will appreciate the CENTAURI for its technology, ventilation, durability and light weight cushioning, especially when running on those hard surfaces.

### FEATURES

- **Breathable engineered knit fabric** ensures great ventilation for those longer miles and ample space for toe splay during natural motion.
- \* **Anatomically designed pressure free tongue** removes pressure and stress from the top of the foot.
- **Progressive new 3D printed logo** on quarter panel, delivers additional mid-foot support.
- **3M reflective heel counter** safety feature for enhanced low light visibility.
- **NEW one full length ENGAGE (E-TPE) foam platform technology** with flex grooves delivers the next level of underfoot cushioning.
- **High abrasion rubber technology: H.A.R.T.** The rubber technology is positioned in key loading areas to deliver better cushioning, flexibility and traction for smooth transitions.
- **NEW Last** provides better fore foot fitting. Added toe-spring to promote a more efficient toe-off.
- **Ortholite sockliner comfort foam insoles** provide long-lasting comfort, excellent moisture management and a high-level of breath-ability achieved through open-cell Ortholite insoles utilizing 20% recycled content.

POWERED BY  
**QUICKFLEX**

**ENGAGE**

#### MEN'S

Sizes  
7-13,14

Weight  
283g

Stack  
22-31mm

Drop  
9mm

#### WOMEN'S

Sizes  
6-11

Weight  
227g

Stack  
22-31mm

Drop  
9mm



NEW

# 361° CENTAURI

## RANGE

NEUTRAL



**M** Y2301-0206  
Oyster Mushroom/Sleet



**M** Y2301-6809  
Mykonos Blue/Black



**M** Y2301-0900  
Black/White



**W** Y2341-1132  
Evening Sand/Dark Cherry



**W** Y2341-6809  
Mykonos Blue/Black



**W** Y2341-0900  
Black/White

### MEN'S

Sizes  
7-13,14

Weight  
283g

Stack  
22-31mm

Drop  
9mm

### WOMEN'S

Sizes  
6-11

Weight  
227g

Stack  
22-31mm

Drop  
9mm